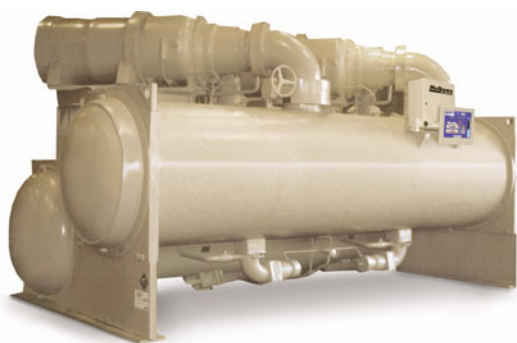


Water-Cooled Centrifugal Compressor Water Chillers—200 to 2700 Tons

- R-134a refrigerant with no ozone depletion potential and no phase-out schedule
- Smallest footprint per ton in the industry to optimize equipment room space
- Controls flexibility—MicroTech® II controls with our Open Choices™ feature for easy integration with the BAS of your choice
- Moveable diffuser geometry provides superior part load performance with or without a VFD
- Dual compressor chiller models offer efficiency choices: WDC for superior part load efficiency and WCC for exceptional full load efficiency

For more detail, refer to Catalog WSCWDC. For the most current information, refer to www.mcquay.com.



**Model WDC dual compressor—single circuit
R-134a—400 to 2500 tons**



**Model WSC single compressor
R-134a—200 to 1250 tons**



**Model WCC dual compressor—dual circuit
R-134a—1200 to 2700 tons**

Modbus®

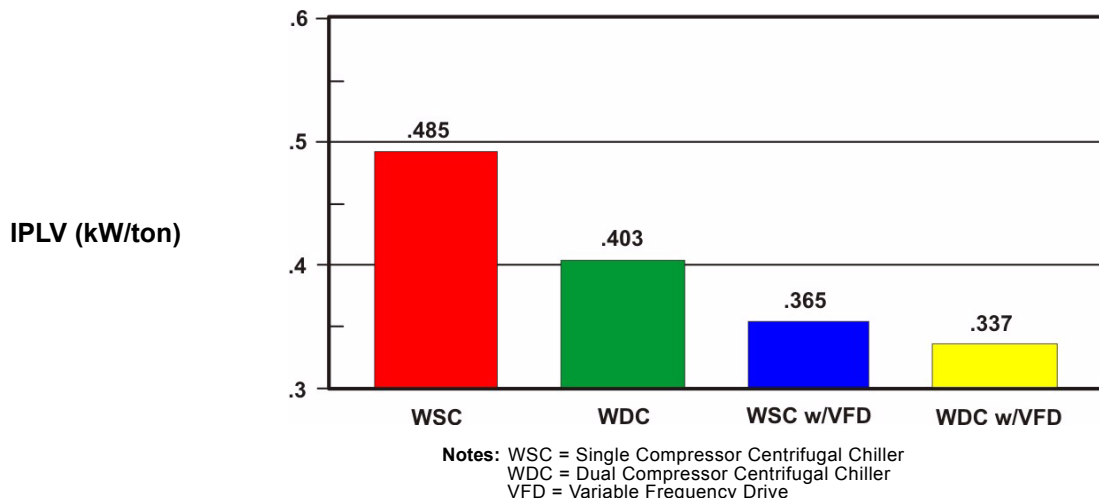
BACnet
International

LONMARK® 3.3

Available LONMARK certified

Water-Cooled Chillers

Relative IPLV efficiencies of various McQuay options for 500-ton selection



Physical Data

Model WSC Series Single Compressor Chiller

Chiller model	Nominal capacity tons (kW)	Dimensions (in) ¹			Max. unit operating weight (lb) ¹
		Maximum length	Maximum width (w/o starter)	Maximum height	
WSC 063	200–300 (700–1050)	175 (4445)	96 (2438)	96 (2438)	16,769 (7606)
WSC 079/087	300–600 (1050–2100)	175 (4445)	80 (2032)	105 (2667)	24,999 (11,340)
WSC 100/113/126	600–1300 (2100–4550)	181 (4597)	104 (2642)	106 (2692)	43,017 (19,513)

Models WDC and WCC Dual Compressor Chiller

Chiller model	Nominal capacity tons (kW)	Dimensions (in) ¹			Max. unit operating weight (lb) ¹
		Maximum length	Maximum width (w/o starter)	Maximum height	
WDC 063	400–600 (1400–2100)	221 (5623)	64 (1619)	90 (2280)	28,815 (13,070)
WDC 079	600–700 (2100–2450)	224 (5698)	74 (1865)	106 (2686)	38,515 (17,470)
WDC 087	700–1200 (2450–4200)	224 (5698)	74 (1865)	106 (2686)	39,875 (18,087)
WDC100/113/126	1200–2700 (4200–8750)	230 (5848)	110 (2792)	116 (2956)	68,996 (31,296)
WDC100/113/126	1200–2700 (4200–9450)	278 (7071)	104 (2651)	110 (2084)	65,806 (29,849)

1. Lengths in inches (mm), weight in pounds (kg).

Centrifugal Compressor Water Chillers

Positive pressure R-134a design

- Sustainable performance for the life of the chiller
- No refrigerant phase-out or availability issues

Variable frequency drive option

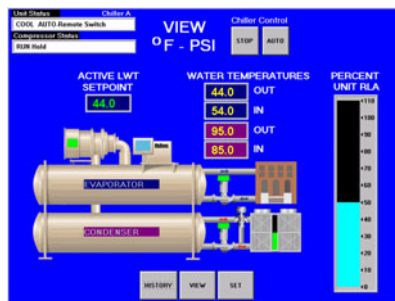
- Improves part-load efficiency
- Reduces annual energy costs

Standard bolt-together construction

- Allows for easier field disassembly and re-assembly
- Facilitates the difficult rigging work often associated with retrofit installations

MicroTech II controls

- Color touch screen operator panel
- Easy integration with most building automation systems

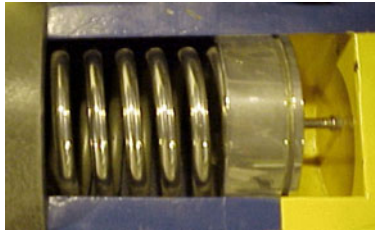


Compact design

- Provides the smallest footprint per ton in the industry
- Fits in most tight equipment rooms

Power failure coastdown protection

- Lubricated compressor coastdown
- Protects bearings from damage after a power failure



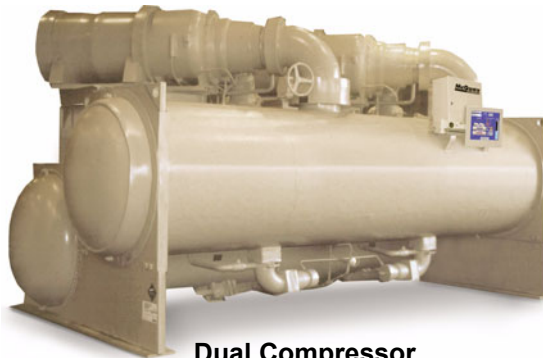
A compressed spring pressurizes an oil reservoir in the compressor, providing force to lubricate bearings in a coastdown.

Unmatched unloading

- Moveable diffuser geometry offers unloading without using a VFD
- Provides improved stability of the chiller water temperature and less harmful cycling of compressors



Dual Compressor Centrifugal Chiller



**Dual Compressor,
Single Circuit**



Dual Compressor, Dual Circuit

All the features and benefits of the single compressor models *plus*:

- Single circuit parallel-flow model provides superior part load efficiency, especially with optional variable frequency drives
- Dual circuit series-counterflow model delivers exceptional full load efficiency
- Automatic backup with at least 60% of the chiller design capacity available on single circuit units and 50% on dual circuit units
- Positive pressure R-134a design has a significantly smaller footprint than R-123 designs